

EDUCATIONAL TRIP

WAKAYAMA

和歌山県教育旅行ガイド



Homestay

Experience Program



Only 40 min.
from KIX!



School Exchange

Welcome to Wakayama Prefecture



What is Wakayama Prefecture?

1

Accessible from KIX

Wakayama is a prefecture in the Kansai region, and its capital Wakayama City is just 40 minutes by highway bus from Kansai International Airport (KIX).

2

Historical Culture

Located on the Kii Peninsula, Wakayama stretches along the Pacific Ocean with a warm climate supporting a fertile agricultural and fishing industry, and is famous for its hot spring resorts. Surrounded by the Kii Mountains, the inland region holds three sacred sites along a pilgrimage road, Kumano Sanzan, Koyasan, and Yoshino/Omine, that have been places of reverence since ancient times, and are registered as a UNESCO World Cultural Heritage Site in 2004 as the "Sacred Sites and Pilgrimage Routes in the Kii Mountains."

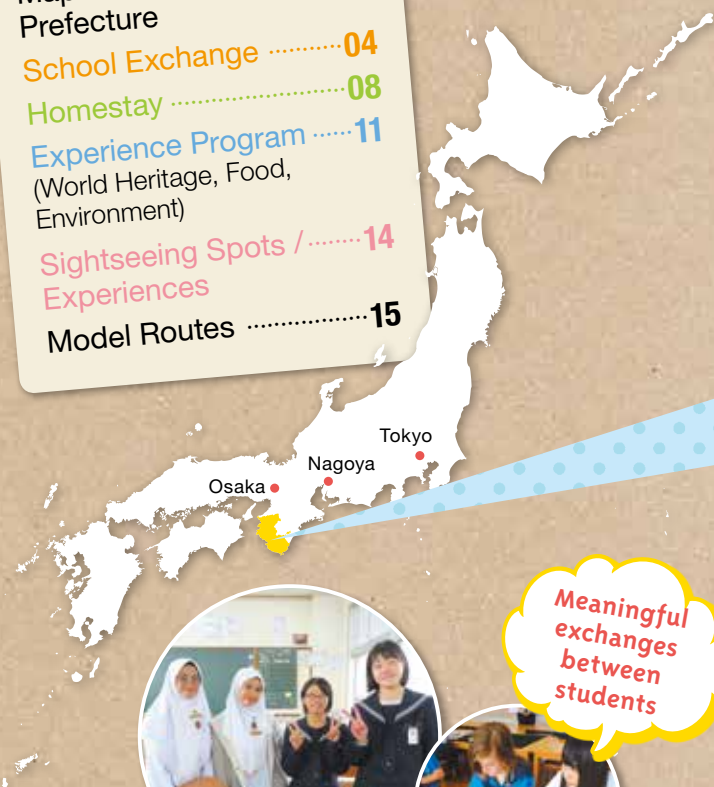
3

Heartwarming Exchange

Magnificent nature, unique culture, and a variety of activities, makes Wakayama ideal for educational trips. People here warmly welcome overseas students. Come and experience the wonders of Wakayama.

Index

Map of Wakayama Prefecture	03
School Exchange	04
Homestay	08
Experience Program (World Heritage, Food, Environment)	11
Sightseeing Spots / Experiences	14
Model Routes	15



Meaningful exchanges between students

//////////////// We are dedicated to supporting you //////////////////

The Wakayama Prefecture Tourism and Exchange Division actively promotes educational travel from abroad. At the heart of our team is an educational travel coordinator with extensive experience as a former principal, ensuring that each trip is meaningful and enriching. This unique role sets us apart from other prefectures and is one of our key strengths. We provide comprehensive support for high-quality school exchanges, including a wide range of experience programs such as homestays, SDGs, disaster preparedness, and food-related activities!



Car / Bus		Shinkansen / Airplane	
From Kansai		From Tokyo	
Kansai International Airport	40 min.	Tokyo Sta.	Shinkansen 2 hours and 30 min.
Osaka City	1 hour and 30 min.	Shin-Osaka Sta.	Limited Express 1 hour
Nara City	1 hour and 40 min.		
Kyoto City	2 hours	Haneda Airport	1 hour and 15 min.
Wakayama City		Wakayama Sta.	
		Kumano-Shirahama Resort Airport	

School Exchange



Wakayama Prefecture offers numerous opportunities for exchange between international and local students. In the 2018 fiscal year, there were 36 exchange programs, including 50 in 2019, and 34 in the 2023 (post-pandemic), with over 4,000 international students participating. These exchanges provide students with a wide array of experiences, from welcome parties and classroom participation to school lunches, cleaning activities, and club activities—offering a firsthand look at the unique aspects of Japanese school life. Some schools specialize in English and foreign language education, while others offer programs that allow students to connect with Wakayama's stunning natural beauty and rich traditional culture. Exchanges are available at elementary, junior high, and high school levels, and in some cases, university exchanges are also possible. Please don't hesitate to reach out to us for further details.



Example of School Exchange Program in One Day



Wakayama Prefecture Annual School Calendar



[For high school] ↔ Difficult period to be accepted at Wakayama high school

* In addition to this, acceptance may be difficult depending on the season. Please contact us about two months in advance.

* This is a rough guide. Specifics depend on the school, department, and area. Holiday periods are almost the same for elementary and junior high schools.



Elementary School

Exchange between Malaysian Elementary School and Wakayama Municipal Miyakita Elementary School

Held: October 31, 2018, morning

Number of visitors: 18 students from grades 5 and 6, teachers and 7 parents

School: Malaysia SK Bukit Damansara Elementary School
Wakayama Municipal Miyakita Elementary School

Number of host participants: All children (177)



the school song and the chorus of "It's a Small World," practiced by the children in advance. Adding to the enjoyment of the Malaysian children was the performance of the school's original Japanese drum ensemble "Miyakita Festival Bayashi" by students in grades 5 and 6. Every year, sixth grade students compose their own songs which were performed on this day, impressing the Malaysian children with the rhythm of Japanese drums and the sound of the recorder. The Malaysian children then also performed a traditional welcome dance, adding to the liveliness of the welcome ceremony.

At the quiz competition which followed, children from Malaysia and Wakayama formed mixed teams and competed on questions testing their knowledge of Japan.

Afterwards, students from grades 1 to 6 moved to their corresponding classrooms where they played games in English. As they played traditional Japanese games such as Kendama or competed in quizzes of national flags, their energetic voices echoed throughout the school.

In the blink of an eye, the half-day exchange came to an end, and finally, everyone at Miyakita Elementary School gathered to bid farewell to the Malaysian children with smiling faces.

Contents of exchange

Eighteen students visited from a Malaysian elementary school. The host, Wakayama Municipal Miyakita Elementary School, is one of the elementary schools that have actively been working to promote international school exchange. Also, as the Principal was originally an English teacher, taking advantage of her strengths and experience, this school has been continuing the international exchange for the children to lead the next generation.

On the day of the event, not only children but also many parents gathered at the Miyakita Elementary School to welcome the SK Bukit Damansara Elementary School group. At the welcome ceremony, student representatives from each school greeted one another in English and exchanged gifts including Malaysian souvenirs, the school crests, and a traditional craft of Wakayama Prefecture called "Kishu Temari." After this, the Miyakita Elementary School students altogether performed

Schedule of the day

9:00	Arrival at school
9:30 – 10:10	Welcome ceremony (Gymnasium)
10:10 – 10:30	Commemorative photo
10:30 – 10:50	Quiz tournament
10:50 – 11:35	English activities (per class)
11:50	Departure from school, final farewell from students

Comments of the Host School

At first, the children at Miyakita Elementary School seemed confused when meeting foreign visitors but the quiz competition sparked more active communication, and everyone began to enjoy themselves. Students reacted very positively to the international exchange, saying "I want to study more and be able to speak English" and "I'm looking forward to making friends from another country next time." The principal of Miyakita Elementary School said, "In their everyday lives, children have no chances to use English, so I wanted them to have the experience of "feeling" actual English communication. Through this opportunity, all students from the first grade had direct contact with English and could feel this experience deeply. I hope this opportunity opens new avenues for their future." From now on, she said, the school intends to proactively move forward with further plans for international exchange.



Case 2

Junior High School

Exchange between Malaysian Junior High School / High School and Wakayama Municipal Kada Junior High School

Held: January 24, 2019, 11:00-14:45

Number of visitors: 26 students, 8 teachers

Participating Schools: SUM Bukit Jelutong and SMK SEKSYEN 7

(junior high school and high school students)

Wakayama Municipal Kada Junior High School

Number of host participants: All students (26)



Contents of exchange

Twenty-six students came from two schools in Malaysia. The host, Wakayama Municipal Kada Junior High School is small with only 22 students, but it holds overseas school exchanges many times through the year and students actively network online with foreign schools on a daily basis.

After arriving, the Malaysian students first went for a stroll along Kada beach and Kasuga-jinja Shrine, which is about a 10-minute walk from the school. Such a beautiful ocean view cannot be seen from the visiting student's city of Kuala Lumpur, so they were happy to take photos even on a cloudy day.

Then they went back to the school, and all students from first to third grades returned to their classrooms and participated in activities with their

Malaysian counterparts. In English, each young person introduced themselves, and through the day, the cultural and geographic distance that once separated the groups faded away.

Afterwards, following lunch and prayer, the welcome ceremony began in the gymnasium. The Malaysian delegation presented souvenirs from their country as well as their school emblem, and in return received the traditional artwork of Wakayama called "Kishu Temari." The Malaysian game of marbles called "Chonka," demonstrated at this time, is still played by some Kada Junior High School students every day.

Next, the Kada Junior High School first and second grade students performed a traditional Lion Dance which has been passed down through the generations since ancient times in the Kada area. In return, Malaysian students gave their own dance performance. Although seemingly a school club activity, it was executed with near professional skill. These exciting performances brought everyone closer together.

Schedule of the day

11:00	Arrival at school
11:10 – 11:50	Walk around Kada beach and Kasuga-jinja Shrine, etc.
12:00 – 12:40	Class activities
12:40 – 13:00	Worship
13:00 – 13:30	Lunch
13:30 – 14:30	Welcome ceremony (Gymnasium)
14:45	Departure from school, farewell from students



Comments of the Host School

The Kada Junior High School students reacted very positively saying, "Even without using language, our exchange was deepened by the physical expression of each other's culture through the Lion Dance and their dance performance." "I learned how to greet people in Malaysian and was able to remember the phrases and use them in person, so I was really happy. We were also really glad that the Malaysian students had also practiced Japanese for us and they spoke it really well." "It was great hearing from the Malaysian students about how much they loved Japanese songs and anime." Various impressions such as these show how moved students were by the cross-cultural communication. After the event, students continued to connect with their Malaysian friends through Instagram, exchanging messages in English about how much they wish to visit each other's country. Because Kada Junior High School has so few students, the Principal seeks to provide opportunities for a wide variety of experiences including international exchange, and field trips along the beach or in the city, to devise ways for all members to interact with each other and make the fullest use of their time together.



Exchange between Australian High School and Wakayama Prefectural Seirin High School

Held: June 16-20, 2018, 5 days

Number of visitors: 5 students, 2 teachers

Participating Schools: Australia Good Shepherd Lutheran College
Wakayama Prefectural Seirin High School

Number of host participants: All students, mainly in the International Studies Course



Contents of exchange

Where international exchange is concerned, Seirin High School stands out in Wakayama Prefecture as a top-level school with its own International Studies Course, tie-ups with sister schools around the world, and long-term study abroad programs. This time five students were accepted from Australia.

Seirin High School's international exchange program is distinctive in extending beyond the classroom, encompassing homestays and extracurricular activities to provide a holistic experience of student life in Japan. Seemingly trivial parts of everyday life, such as wearing uniforms and going to school by bicycle or train, are yet an interesting experience for foreign students. In addition, during their stay, they are matched with a one-on-one "Buddy" from among the Seirin High School students providing chances for deeper communication.

This time, the Australian students arrived in Wakayama City on June 16, met their host families, and since the following day was Sunday, enjoyed some free time at their new home. Commuting to school began from the 18th. That day, a welcome ceremony was held at the school, including singing and dancing performances, and a school orientation in English. After that, they were paired with their Buddy and took part in class as students introduced what they loved about each other's countries. In the afternoon, a Japanese cooking experience and also a tea ceremony were arranged by the student council. With their Buddies, the Australians then went out to visit Wakayama Castle. Guidance about the castle in English facilitated deeper understanding. After school, they joined various activities such as the Yacht Club and the Sword Fighting Club.

On the 19th a Class Match event was held. Students entered sports events, and through cooperation with their Buddies in these games formed closer relationships.

On the last day of their stay, the 20th, students attended classes in the morning then had a farewell ceremony in the afternoon. By this time, the relationships between the visiting Australians and their Buddies as well as other students at Seirin High School had become quite close, and sadly they bid each other farewell with promises to stay in touch.

5-day schedule

June 16	Arrival in Wakayama City, stay at host family
June 17	Spend a holiday with the host family
June 18	School exchange, overnight stay
June 19	School exchange, overnight stay
June 20	School exchange, Departure from school



Comments of the Host School

Seirin High School approaches international exchange activities with exceptional positivity and there are many occasions of interactions between students and host students/local people, so preparations are made smoothly. As the teacher in charge has said, through international exchange, they want students to encounter different cultures and ways of thinking, to become adults who respect the importance of diversity. At Seirin High School, there is a wealth of art classes, along with club activities such as flower arrangement, tea ceremony, and a Japanese music club, ideal for those interested in an active cultural experience beyond usual classroom lectures.



Homestay



Stay in a local family home for an immersive experience in Japanese life and culture. People of Wakayama Prefecture want to share their world with you. Students who have participated thus far have said that although the stay was brief, they were treated as warmly as if they were really part of the family, expressed a desire to meet their host family again, and to return to the region.

A distinguishing characteristic of homestays here is the chance to experience not only daily life, but also a family business such as agriculture or fishing. Experiences such as making home-cooked dishes using vegetables harvested by yourself create opportunities for holistic learning of various things such as nature, culture, and lifestyle.

In Wakayama Prefecture, local governments and residents have worked together with both public and private sectors to arrange the best system of care for young visitors as the entire region awaits their arrival.

Example of Schedule

Afternoon

Welcome ceremony
Face-to-face meeting with the host family

Lifestyle experience at each home
Agricultural work, fishing, walking, etc.



Night

Dinner
Making dinner with family

Bath / Bed
Students themselves prepare baths and futons



Morning

Wake up / Breakfast
Put away the futon and make breakfast



Noon

Farewell ceremony
Final time with host family

Homestay Acceptance Group

Three representative organizations. Homestays accepted throughout the prefecture!

Area	Facility Name/Contact	Number of People	Feature/Experience	From KIX
1 Shirahama/ Susami	Minami-kishu Exchange Co., Inc. 📍 306-1 Ago, Shirahama-cho, Nishimuro County ☎ +81-739-53-0055	240	Country life experience (farming, fishery experience)	120 min.
2 Hidaka	Kishu Experience Yume-Club 📍 Wasa 1030-90, Hidakawa-cho, Hidaka County ☎ +81-738-70-4333	160	Country life experience, farming, fishery experience (plum, Kishu Bincho charcoal)	75 min.
3 Kimino	Kimino Minpaku Council 📍 226-1 Kono-ichiba, Kimino-cho, Kaiso County ☎ +81-73-495-3462	70	Country life experience (yukata dressing, firefly observation, star watching)	60 min.

*See the map on p.3 for the location of each organization.

*For homestay, individual experience varies depending on the home.



Shirahama Area / Susami Area

■ **Management organization:** Minami-kishu Exchange Corporation, Inc.

■ **Number of hosts:** 80

■ **Maximum number of people accepted:** 240

■ **Acceptance period:** All year



Features

In the southern part of Wakayama Prefecture lies an area called "Minami-kishu." Two towns here, Shirahama Town and Susami Town, are actively accepting visitors interested in homestays. Facing the vast expanse of the Pacific Ocean, the region is surrounded by the rich environments of sea, mountains and rivers. A few resort areas dot the coast, but there are many calm, peaceful villages as well.

Welcomed as a member of the family, each student can experience everyday life in Japan through walks around the area, farming, fishing, and encounters with traditional culture. Where food culture is concerned, it's important that students and families cook with vegetables harvested together, and fish caught from the local rivers and sea.

In addition to the review meetings following each experience, workshops are held once or twice a year for the entire host family to work on improving the daily homestay operations. We also pay attention to safety measures, such as taking students to inspect evacuation shelters used in the event of a disaster.



Experience and Homestay Program (Example)

* Please contact us in advance as details may vary depending on the length of stay, time of stay, weather, number of people accepted, etc.

Kumano Kodo Trekking (all year)

Walk along the World Heritage pilgrimage route with a guide. As part of the journey, cross a river by boat.



Bamboo Work Experience (all year)

Enjoy gleanng the wisdom of ages past through making daily goods such as chopsticks and cups from bamboo.



Indigo Dyeing Experience (all year)

Experience dyeing original patterns with indigo dye which is a traditional industry in Wakayama Prefecture.



Kishu Nanko Ume Experience (all year)

Harvest the special fruit called "Nanko Ume" (plum) and make plum jam and juice.



The Comments of Host Families

The pure Hikigawa River is the pride of this area. When I put fried sweetfish from the Hikigawa River on the table, the delicious dish made the students so happy that I was moved.



I was happy so many students studied a lot about Japan. We were interested in their national language and culture too, so it was also great that they motivated us to study as well.



In houses around here, the rooms are large, so it's no problem for young people to have fun at night. Many students get excited about kotatsu and tatami mats. If they can stay in one of these old folk houses, I really want them to experience the Japan of long ago.



One night and two days is such a short time, but it's always sad to say goodbye. I hope they come see me again, and I would like to go visit them too.

2

Hidaka Area

■ Management organization: Kishu Experience Yume-Club

■ Number of hosts: 70

■ Maximum number of people accepted: 160

■ Acceptance period: All year



Features

In central Wakayama Prefecture, facing the Pacific Ocean, people's lives are in harmony with the mountains and the sea. Famous tourist spots are the Kaeru Bridge (Frog Bridge), designed to look like a giant frog, and the Kao no Ie (Face House), a building resembling a human face. Although entry to the Kao no Ie is usually not allowed, students and their host family can go inside.

True to the motto "Once you stay with us, you are our child," students are welcomed just as if they were the real children of homestay families. Agriculture and fishing makeup the livelihoods of many households here, and all can offer the farming experience (depending on the length of stay, season, and weather). In addition, one can partake in old-fashioned customs, rare in modern times, such

as taking a Goemon bath where the water is heated by a fire underneath the tub. Making plum jam and juice are also popular pastimes.

In addition to providing training in advance and preparing host manuals, study sessions are also held for hosts regarding the Muslim faith, and many Muslim students are accepted every year.

Experience and Homestay Program (Example)

* Please contact us in advance as details may vary depending on the length of stay, time of stay, weather, number of people accepted, etc.

Fishery Experience (all year)

Cruise on a fishing boat, experience feeding farmed fish, and observe coastal ecosystems.

Golf Experience (all year)

Play golf at the local course in town. You may be able to meet some new friends here.

The Comments of Host Families



The students from Taiwan and Malaysia said "we have never seen such clear ocean water" and were clearly moved by the sight, which made me really happy.



Even if there was some language barrier, through gesture and using our smart phones we could overcome any communication problems.

3

Kimino Area

■ Management organization: Kimino Minpaku Council

■ Number of hosts: 16

■ Maximum number of people accepted: 70

■ Acceptance period: All year



Features

A mountain village area located in the northern part of Wakayama Prefecture. Famed for its beautiful starry sky, the region's Misato Observatory is known as one of Japan best facilities of its kind. The area is also naturally blessed with bountiful environments to be enjoyed throughout the seasons such as the clear waters of the Kishigawa River and the Oishi Highlands ideal for trekking.

In addition to families running guest lodging from old folk houses, local residents also accept visitors into their private homes. At each house, the main experience is of helping with family business such as farming or making simple home-cooked meals together using harvested vegetables.

In addition, each host family will introduce various seasonal customs, providing experiences unique to mountain village life, such as wearing yukata and eating somen noodles from water streaming through bamboo in the summer, and harvesting the region's signature fruit, persimmons, in the fall.

Experience and Homestay Program (Example)

* Please contact us in advance as details may vary depending on the length of stay, time of stay, weather, number of people accepted, etc.



River Play Catching Ayu (sweetfish) Experience (summer)

Try to grab sweetfish in the Kishigawa River. The caught sweetfish can be grilled on the spot and eaten.

Paper Making Experience (all year)

Observe and experience the process of making *Washi* paper (Japanese paper) using traditional techniques.



The Comments of Host Families



I think the charm of a homestay in Kimino Town is to enjoy the slow life amid lush natural surroundings that change each season, and to be part of nature through farming. I am glad that so many students are interested in agriculture.

Our house is surrounded by rice terraces and fields. Here, we serve traditional local meals using ingredients we harvest. Over a meal, and sometimes during a BBQ, we look forward to talking with students.



Experience Program

Wakayama Prefecture is blessed with the natural bounty of mountains, rivers and sea. Amid this magnificent scenery, through a range of hands-on study activities, students can experience a new culture and gain knowledge tied to sustainable development goals.



World Heritage

The Kii Mountains have long been regarded as the sacred home of the gods, where three holy sites, "Kumano Sanzan," "Koyasan," and "Yoshino/Omine," came into being. These sites and the "Pilgrimage Routes" were designated as a UNESCO World Cultural Heritage Site.



Learn the importance of history and cultural conservation activities

1 Kumano



Kumano Kodo Restoration Activities

The Pilgrimage Routes, "Kumano Kodo," is mostly comprised of unpaved paths winding through the mountains. People carry out a restoration program in order to carefully preserve the Kumano Kodo and pass it on to the next generation. This includes replenishing the soil, cleaning the crossing ditches and gutters, or removing loose stones.

Be touched by a sacred place worshipped for over 1,000 years

2 Kumano



Kumano Kodo Walk and Heian Period Clothing Experience

Steep mountain slopes constitute most of the "Pilgrimage Routes," which caused ancient pilgrims to declare it a path of penance. Currently, the rest area has been improved though still retaining the ambience of its era, making this a course where beginners can walk with peace of mind. In addition, visitors can try on beautiful costumes designed with the same motif of worshippers from 1,000 years ago.

Calm your mind and experience the world of Buddhism

Temple Lodging at Koyasan

Within the spacious sacred ground of Koyasan, visitors can stay at the monastery, or "shukubo." Experience the life of a monk by staying in the traditional housing, eating vegetarian food, participating in the morning sutra chants, and practicing sutras copying and the Buddhist meditation method "Aikan." These enlightening experiences give disciples a glimpse of the real world of Buddhism.



3 Koyasan



Wakayama Prefecture sprawls along the Pacific Ocean, with mountains extending inland through terrain overflowing with natural abundance amid a warm climate. Naturally, farming, forestry and fisheries thrive, and soy sauce, dried bonito and other ingredients essential to Japan's food culture are produced here. As the area boasts the highest fruit production in the nation it has also earned the reputation as "The Fruit Kingdom."



Learn about healthy food and plum preservation technology

4 Kumano



Plum Juice / Pickled Plum Making Experience

Wakayama Prefecture produces the most Japanese plum "ume" in Japan, and "Nanko Ume" is the top brand. At facilities throughout the prefecture it is easy to experience making delicious plum juice or "umeboshi" dried plums, a healthy and essential preserved food in every Japanese household.

Learn about the manufacturing method of this seasoning essential to Japanese cuisine

5 Yuasa



Yuasa Soy Sauce Brewery Tour

Soy sauce, the indispensable seasoning of Japanese cuisine, is said to have originated in Yuasa Town, Wakayama Prefecture. Visitors can observe soy sauce manufacturing methods and experience part of the soy sauce making process.

View society through the lens of the world of tuna, the vital element of sushi

6 7 Wakayama Kushimoto



Market Tour / Tuna Farming Experience

Wakayama Prefecture boasts one of the largest tuna catches in all Japan, comprised of several types, including high-grade bluefin tuna. At the "Kuroshio Market," a tuna slicing show is held every day where visitors learn about types of tuna, fishing methods, and witness the professional skill. In addition, in southern Wakayama's Kushimoto Town, visitors can head out to sea and experience feeding tuna at a tuna farm.

A sweet experience in one of Japan's fruit kingdoms

8 Throughout Wakayama



Fruit Picking

Wakayama Prefecture produces a variety of fruits throughout the year, and fruit picking can be enjoyed in numerous places. For details, please see the Wakayama Experience Map on the website below.

<https://en.visitwakayama.jp/plan-your-trip/download-maps-and-brochures/>

Fruit	Month	Jan.	Feb.	Mar.	Apr.	May	Jun.	Jul.	Aug.	Sep.	Oct.	Nov.	Dec.
Strawberry													
Blueberry													
Peach													
Melon													
Grape													
Persimmon													
Citrus fruits													

Environment

Surrounded by sea and mountains, the natural terrain of Wakayama is filled with mystery and beauty, a precious environment appreciated by the world. At the same time, many natural disasters have struck here, imparting great wisdom that the people strive to pass down to following generations.



Experience people and the planet acting in concert

9 Kushimoto



Nanki Kumano Geopark

At the southern tip of the prefecture an area containing rare rock formations, created from the subduction of tectonic plates, has been certified as a Japanese Geopark. The Nanki Kumano Geopark Center uses large three-dimensional models, projection mapping, and interactive exhibits to help visitors have fun while learning about the origins of this land and the mysteries of nature.

Have fun and enjoy nature to the fullest

10 Throughout Wakayama



Water Sports

Wakayama Prefecture is a popular spot for water sports. Go snorkeling and observe the underwater terrain and creatures of Nanki Kumano Geopark. Even beginners can enjoy a fulfilling learning experience while being guided by instructors. In addition, visitors can enjoy canoeing and rafting experiences.

Learn about tsunami disasters

11 Yuasa



Inamura-no-Hi no Yakata

In 1854 when this land was struck by an earthquake and tsunami, Hamaguchi Goryo guided villagers to safety by lighting bales of rice straw on fire and thus saved many lives. At this facility, which conveys his achievements and the importance of early evacuation, people learn about tsunami disaster prevention through games and simulations.

Real disaster prevention study by research institutes

12 Kumano



Wakayama Sabo Research and Education Institute

After a flood struck the prefecture in 2011, Japan's only base for research and education around sediment-related disasters was established. Visitors can deepen their understanding about the nature of such events and get disaster prevention tips through videos and panels.

See a waste treatment and renewable energy site

13 Wakayama



Aogishi Clean Center Tour

In Wakayama City, combustible waste is incinerated, and the heat produced is used to generate power to run the facility. By touring the plant, people can learn about proper waste disposal processes and the utilization of renewable energy.

Get in touch with nature on the beach

14 Hidaka



Beachcombing Experience and Cleaning Experience

On the shoreline in Mihama Town, beachcombing is a popular pastime where combers can see various shellfish and sea creatures, and collect sea glass and other treasures. You can also learn about the environment by cleaning up the beach.

Sightseeing Spots / Experiences

Wakayama offers a variety of tourist attractions and travel plans popular with both domestic and foreign visitors alike. These are sure to enrich your experience and provide fond memories of Wakayama.

Enter the Animal Kingdom

Adventure World

At this zoo, aquarium, and fun fair all-in-one amusement park, say hello to 1,400 animals of about 140 species from the land, sea, and air. Visitors can now meet four Giant Pandas here. Feel the energy of the animals firsthand by petting and feeding them.



15
Shirahama

How adorable! SNS draws the world's attention



16
Wakayama

The Wakayama Electric Railway Kishi Station Cat Stationmaster, "Tama"

At Kishi Station on the local railway in Wakayama Prefecture, there is a "cat stationmaster." Today, on the Kishigawa Line, there is a Tama Train filled with cute cat illustrations, and the station building has been redecorated following the feline motif. These days, Nitama and Yontama, the second and fourth stationmasters are active.

DESIGNED BY EIJI MITOOKA + DON DESIGN ASSOCIATES

Experience as a samurai



18
Wakayama

Wakayama Castle and Period Attire Experience

The historic site of Wakayama Castle was the residence of the Kishu Tokugawa Family, one of the three Tokugawa families of the Edo period (1603-1868) and has many attractions such as the majestic castle tower itself as well as the Nishinomaru Garden. Visitors can also don the garb of samurai, princesses or ninjas and roam the castle grounds.

Enjoy both the sea and the aquarium



17
Kushimoto

Kushimoto Marine Park

Kushimoto Marine Park was the first designated underwater park in Japan. The sea of Kushimoto under the strong influence of the nearby Kuroshio Current boasts exceptionally transparent warm waters. All year long, visitors can enjoy this beautiful underwater scenery populated with colorful tropical fish swimming among the largest table coral reef in Honshu, known to be the northernmost coral ecosystem in the world.

Use traditional techniques with your own hands



19
Wakayama

Kishu Lacquerware Painting Experience

Kishu lacquerware from Wakayama stands out for its 600-year history. At Uruwashikan (Kishu Lacquerware Traditional Industry Museum), learn brushwork techniques and "makie," the art of decorating the lacquered surface using metal powder, usually gold or silver. You can take it home on the same day, so it's perfect as a souvenir.



Wakayama Full Package Model Route

Day 1 Afternoon

Kansai International Airport

▼ 1 hr. 30 min.

1 Koyasan

Strolling in Koyasan
Okunoin Cemetery Night Tour
Shukubo

(vegetarian food, Buddhist meditation method "Ajikan," Copying Sutras)

Learn about
Koyasan, a
World Cultural
Heritage Site

Stay at shukubo

Day 2 Morning

▼ 3 hr.

2 Kumano Kodo (Hongu Town in Tanabe City)

Kumano Kodo restoration activities

Kumano Kodo walk

(Hosshinmon-oji to Kumano Hongu Taisha)

▼ 1 hr.

Nachikatsuura Town

▼ 40 min.

3 Kushimoto Town

Tuna farming experience

Nanki Kumano Geopark

Fieldwork

Canoeing

Snorkeling

▼ 1 hr.

4 Shirahama Town

Homestay / welcome ceremony

Homestay / farewell ceremony

Strolling in Shirahama Town

Minakata Kumagusu Museum

Nature observation

School exchange

Shirahama onsen (hot spring)

▼ 1 hr.

5 Arida and Hidaka Area

Soy sauce brewery tour

Soy sauce making

Strolling Preservation Districts for Groups of Traditional Buildings

(Yuasa Town)

▼ 15 min.

6 Inamura-no-Hi no Yakata Tour (Hirogawa Town)

▼ 30 min.

7 Mihama Coast

Beachcombing / cleaning

Homestay / welcome ceremony

Homestay / farewell ceremony

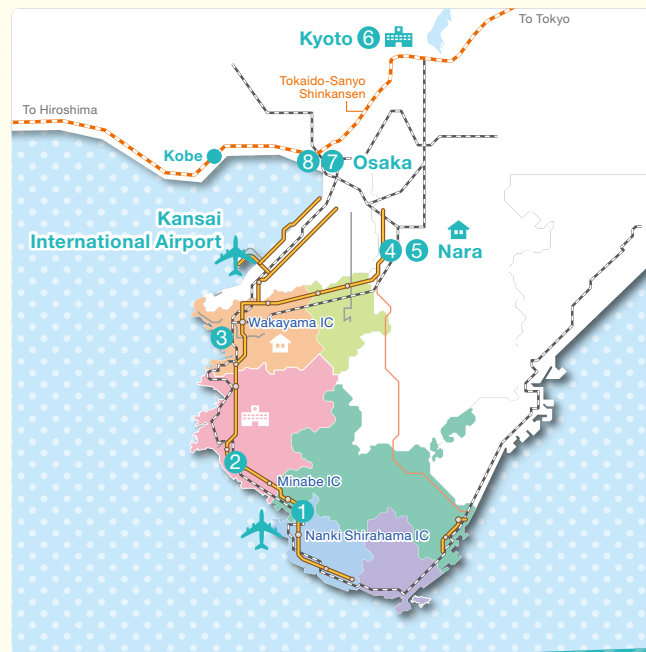
▼ 1 hr.

8 Wakayama City

School exchange

▼ 45 min.

Kansai International Airport



Kansai Model Route "Nature experience"

Day 1

Kansai International Airport

▼ 1 hr. 30 min.

1 Shirahama Town

Adventure World

Onsen (hot spring)



Stay at hotel

Day 2 Morning

▼ 35 min.

2 Minabe Town

Fieldwork

Lecture

Pickled plum making

Learn about the
World Agricultural
Heritage "Minabe-
Tanabe Ume System"



Homestay

Afternoon

School exchange with
a local agricultural high school

Homestay / welcome ceremony (Kimino Town)

Day 3 Morning

▼ 30 min.

3 Kainan City and Wakayama City

Lacquerware painting

▼

Kuroshio Market

(making sushi / tuna slicing show)

▼ 1 hr. 30 min.

▼

4 Asuka Village (Nara Prefecture)

Homestay / welcome ceremony



Homestay

Day 4 Morning

Homestay / farewell ceremony

▼ 35 min.

5 World maple park Nara Kaede no Sato Hirara

▼ 2 hr.

▼

6 Kyoto City (Kyoto Prefecture)

Strolling around the city

Stay at hotel



Day 5 Morning

School exchange

▼ 1 hr.

7 Osaka City (Osaka Prefecture)

Strolling around Shinsaibashi area

Stay at hotel



Day 6 Morning

▼ 30 min.

8 Universal Studio Japan

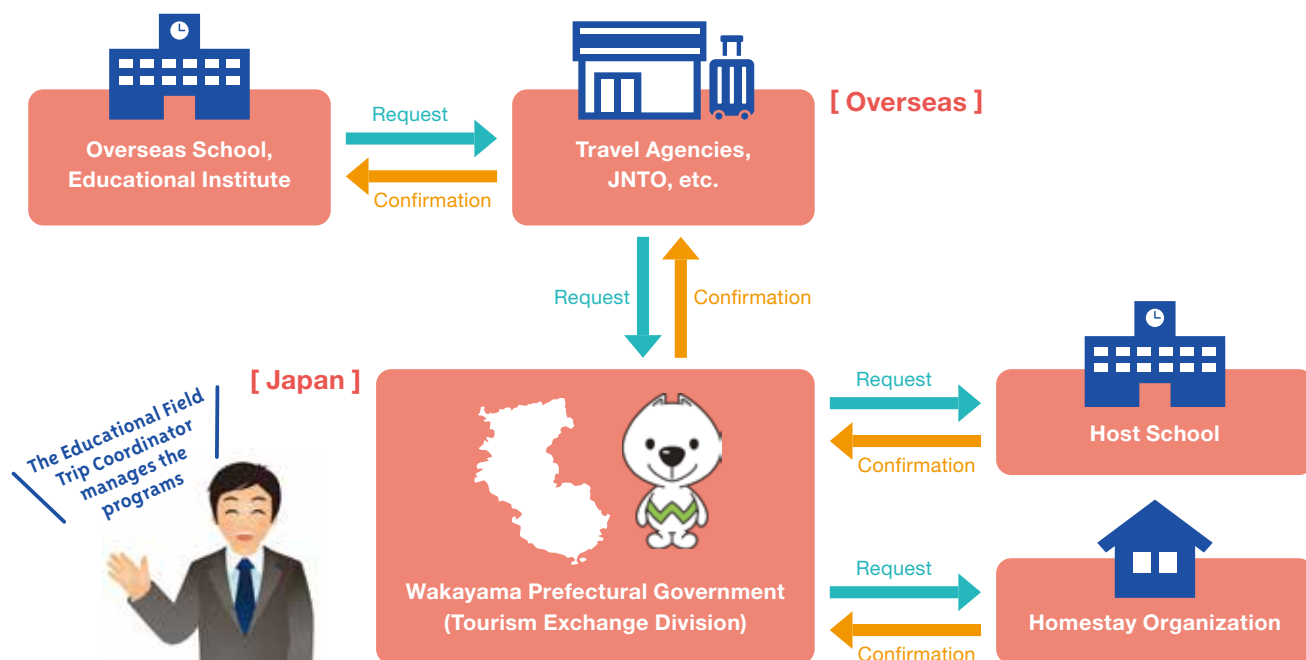
▼ 40 min.

Kansai International Airport

How to Apply

for School Exchange and Homestay

in Wakayama Prefecture



- The application process is as shown in the diagram above. To apply, please contact us as you will need to submit the designated application form.
- Please make your request / consultation at least two months in advance.
- It is necessary to stay in the prefecture at least one night.
- For homestay, in principle, children under the age of 10 are not eligible to participate.



Homestay 5 Basic Rules

- Please refrain from using mobile phones, and enjoy conversation with host family
- Make an effort to enjoy all the prepared meals
- Keep the toilet and bath clean
- After use, return the futon to its original position
- Please refrain from touching the homestay family's property without permission

Contact Information

Tourism Exchange Division, Wakayama Prefectural Government

[Address] 1-1 Komatsubara-dori, Wakayama City, Wakayama Prefecture, 640-8585 Japan
 [TEL] +81-73-441-2785
 [E-mail] e1005001@pref.wakayama.lg.jp
 [Website] <https://en.visitwakayama.jp/exchanges-and-fieldtrips/>

